

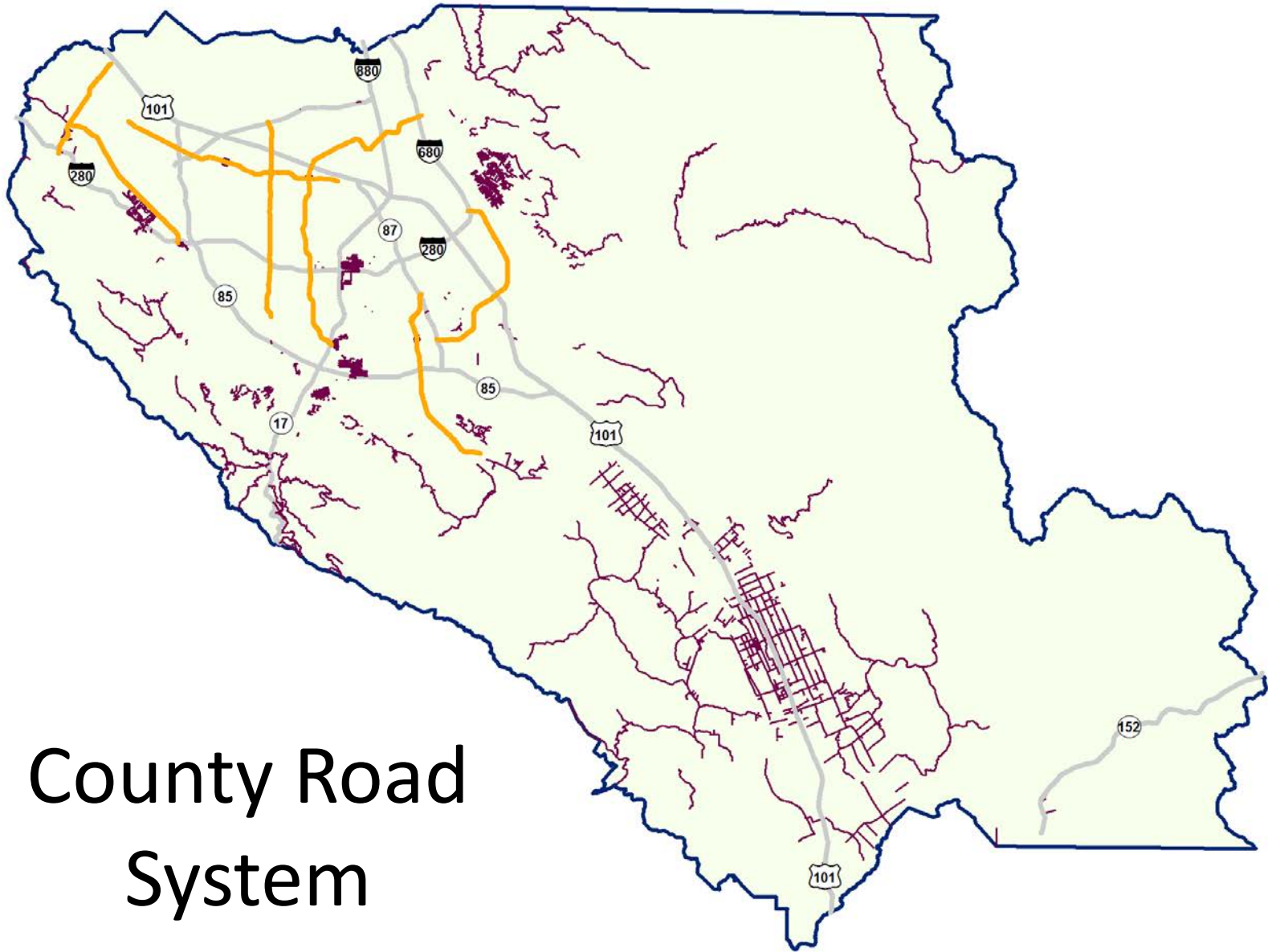


CIRCULATION AND MOBILITY PLANNING PROJECT



Project Objectives

1. Develop New General Plan Circulation and Mobility Element
2. Prepare Roads Master Plan:
 - Public and private road development policies and standards
 - Road expansion/improvement priorities
 - Complete Street improvements



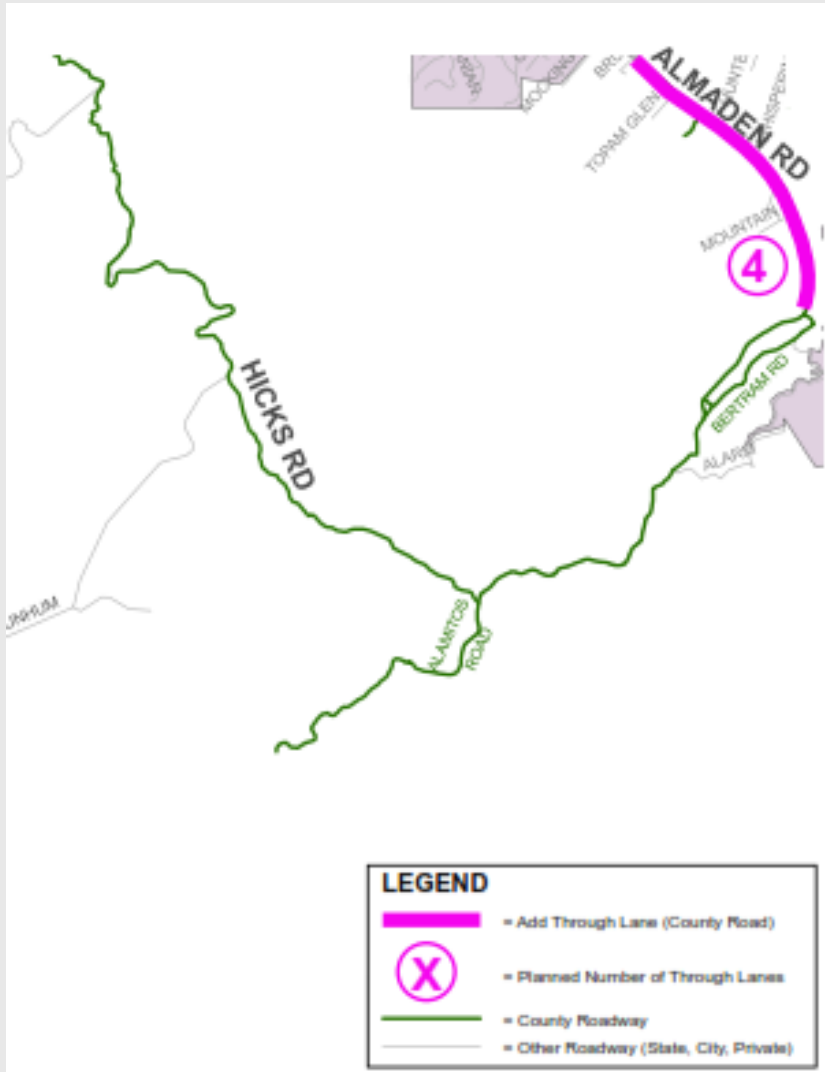
County Road System

The background of the slide is a photograph of a multi-lane highway with heavy traffic. A yellow school bus is visible in the middle ground, and various cars are in the foreground and background. The image is semi-transparent, allowing the text to be clearly visible.

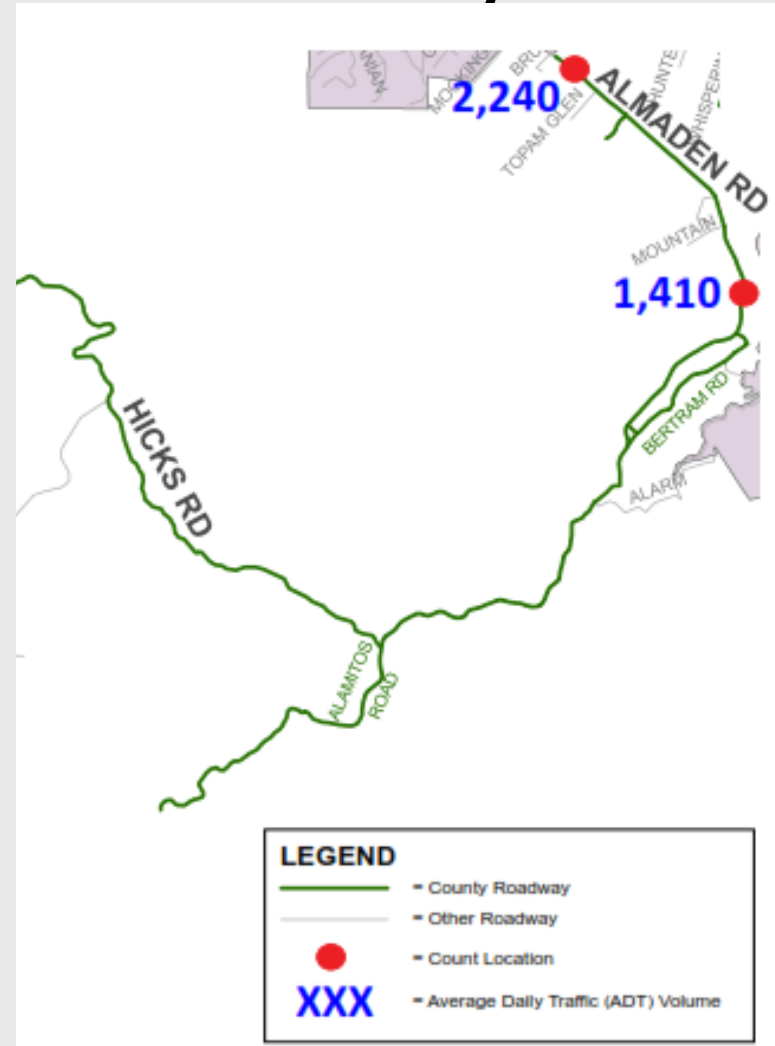
What Does This Mean for New Almaden?

An opportunity to update road plans and standards to reflect the community context of New Almaden as a National Historic Landmark District

1971 Plan



Current Daily Traffic



Project Schedule

- December 2014 – Complete General Plan Circulation and Mobility Element
 - Countywide policies and strategies
- June 2015 – Complete Roads Master Plan with updated policies and standards
 - Road specific with opportunities to customize for particular situations

What We Need Tonight

Fill Out and Return Handouts

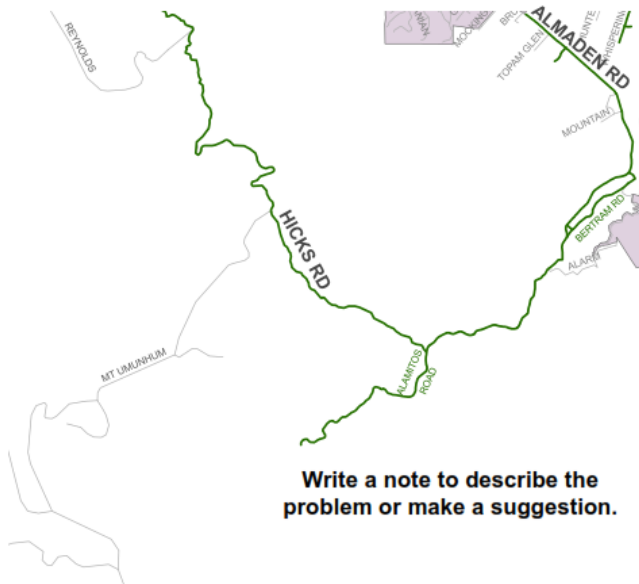
Mark Up Maps

SANTA CLARA COUNTY CIRCULATION AND MOBILITY PLANNING PROJECT



Please highlight or circle locations on the map where your needs as a motorist are not being met?

LEGEND	
	- County Expressway
	- County Roadway
	- Other Roadway



Write a note to describe the problem or make a suggestion.

Divide \$1,000

SANTA CLARA COUNTY CIRCULATION AND MOBILITY PLANNING PROJECT

If you had \$1,000 to improve the County's transportation system, how would you spend it?

Spend all of your money in the category most important to you or divide it among several categories.

Roadway Capacity Improvements (e.g. construct an additional through lane) 	\$
Bicycle Improvements 	\$
Pedestrian Improvements 	\$
Equestrian Improvements 	\$
Pavement Maintenance (e.g. fill potholes) 	\$
Other Improvements (please describe)	\$
TOTAL	\$ 1,000

Community Input

- Website:
<http://circulationplan.countyroads.org>
(Sign up for project updates!)
- Phone: 408-573-2417
- Email: circulationplan@countyroads.org